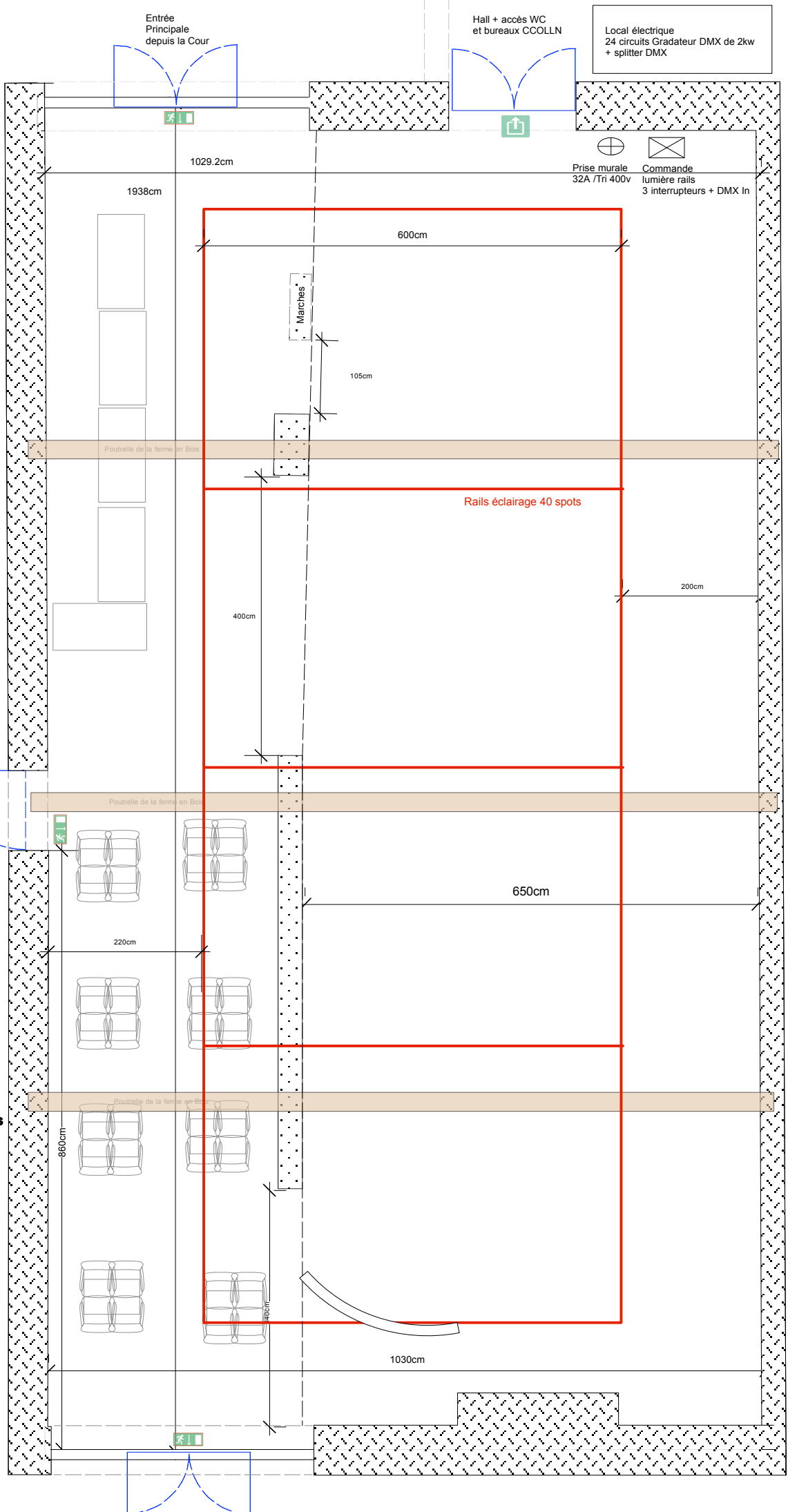
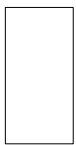



**Plan de masse + exemple mobiliers**  
**Grange Douaire**  
 Avril 2017  
 Echelle 1/75  
 Centre culturel d'Ottignies Louvain-la-Neuve



Disponible

8 x  **table**  
1,35m x 70cm

120 x  **chaises**

12 x  **Praticables**  
30cm  
1m x 2m

Sur demande

 **table en bois de brasserie**  
80m x 50cm